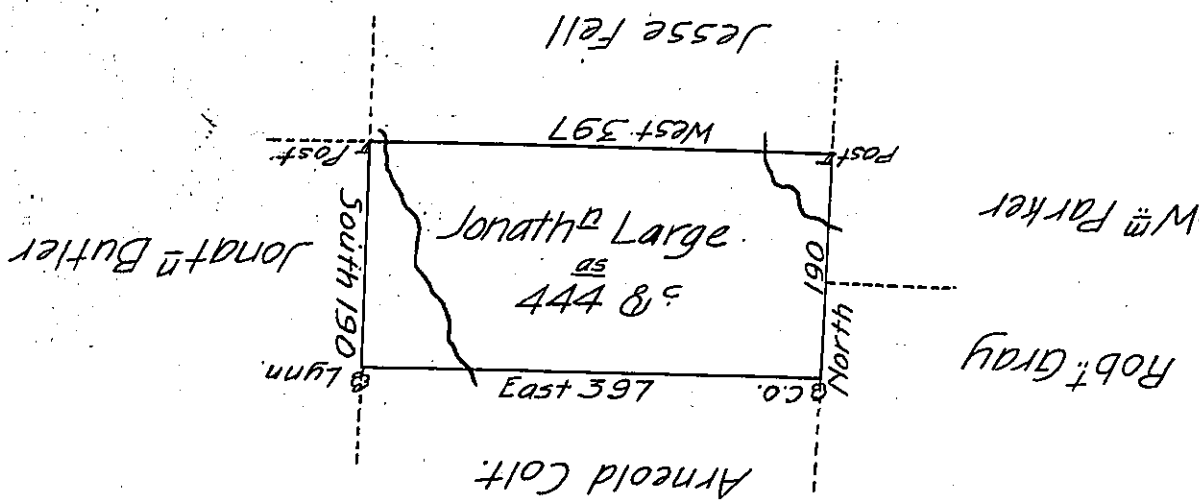


X

c. 49. 185 -



c. 822. 81 -

A Draft of a tract of land Called _____ Situate in the Co (obl.) of
 Luzerne Containing four hundred forty four acres (obliterated)
 Allowance Surveyed for Jonathan Large the 6th Augus (obl.)
 by Virtue of a warrant dated the 2^d July 1793

by W^m Gray D. (obl.)

To Daniel Brodhead Esq.
 Surv^r Gen!

IN TESTIMONY that the above is a copy of the original remaining on file in
 the Department of Internal Affairs of Pennsylvania, made
 conformably to an Act of Assembly approved the 16th day of
 February, 1833, I have hereunto set my Hand and caused
 the Seal of said Department to be affixed at Harrisburg,
 this eighteenth day of August 1905.

La a c D. [Signature]
 Secretary of Internal Affairs.